

# Village Pets Professional

## Dog Grooming

by *Katie x*



### Price List

Prices starting from:

	<i>Small</i>	<i>Medium</i>	<i>Large</i>	<i>X Large</i>
<b>Wash and Go</b> <i>Wash and towel dry</i>	£13	£15	£20	£25
<b>Wash and Dry</b> <i>Wash and blow dry</i>	£25	£30	£35	£42
<b>Full Groom</b> <i>Wash, dry, full body cut &amp; style using clippers &amp; scissors or full de-shed using de-shedding tools - whichever suits your dogs coat, nail trim, ear wash and plucking (if required), hygiene area tidy up and paw pads. Breed standard cuts available.</i>	£43	£48	£54	£60

**Prices are subject to change depending on your dog's coat and behaviour**

### **Wash and Go**

*Wash and towel dry*

### **Wash and Dry**

*Wash and blow dry*

### **Full Groom**

*Wash, dry, full body cut & style using clippers & scissors or full de-shed using de-shedding tools - whichever suits your dogs coat, nail trim, ear wash and plucking (if required), hygiene area tidy up and paw pads. Breed standard cuts available.*

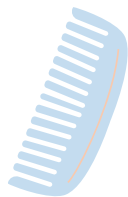
### **Hand Stripping**

*Please contact us for a price*



### **Extras**

Nails	£8
Blueberry Facial	£5
Ear Cleaning	£7
Tear Stain Remover	£2.50
Nose and Paw Balm	£2.50



*Extras can be added on to wash and go and full groom for an additional cost.*

*Please let us know prior to your appointment so we can allocate enough time.*

You are unable to stay in the salon or on site to wait for your dog. You will receive a text 15 mins before your dog is ready so you can head back to site to collect them.

*If your dog is matted and we are unable to de-mat them within 15 mins they will be shaved down to a suitable length to ensure mats are gone and you will be charged an additional fee between £5 and £15. It is crucial to maintain your dog's coat to prevent mats!*

